



# PPE PRODUCT GUIDE 2023



# CONTENTS

Anvil Shoes.....4-7

Weartech.....8-13

Showa Gloves.....14

Polyco Gloves.....15-18

Ultragrip® Oven Mitts.....19

Bunzl UK Ltd T/A National Safety.....20-22

- Gloves.....20
- Safety Hats.....20
- Safety Headwear...21-22
- Safety Apron.....22
- Over Jacket.....22
- Hi-Vis Jackets.....23
- Hi-Vis Trousers.....23



**Specific PPE equipment available upon request**



In the hierarchy of risk mitigation PPE is the last resort when a risk cannot be removed or mitigated by other measures. This means that the PPE we at Compass UK & Ireland provide to our teams must be fit for purpose, which not only means providing the correct levels of protection, but is also practicable and comfortable, so that colleagues can carry out their tasks safely. This new PPE catalogue builds on the work we carried out ahead on the previous version, introducing new lines which we hope will achieve that dual aim of protection and comfort. This is an ever evolving topic, so if you have feedback, that would be welcomed as would any items you think are missing from it.



Mark Armstrong  
HSE & Technical Services Director

Anvil Traction is part of the Tripal Group and has been trusted to design and develop work footwear for some of the world's best-known brands for over 30 years. Compass has partnered with us to provide colleagues with some of the safest and most comfortable footwear available on the market.

**THE WAY WE WORK**



**SAFER**

World Leading  
Traction Technology  
  
Ethically Sourced  
  
Accident Reduction  
50%+



**GREENER**

ISO 140001  
  
Sustainable Materials  
  
Rethink, Reduce,  
Recycle



**HAPPIER**

Comfort  
Design/Style  
Well-being

**ANVIL TRACTION TECHNOLOGIES**

In 2021, Slips, Trips & Falls (STF) accounted for 33% of all accidents in the UK workplace, an average of 48 accidents per day. STF is the biggest cause of accidents in the workplace by far, which is replicated across the world!

**AT-GRIP™ | AT-ENDURANCE™ | AT-COMFORT™**

**AT-GRIP™** is a result of years of development with Sheffield University to develop the best slip-resistant outsole on the market, this includes outstanding durability via **AT-ENDURANCE™** which more than doubles the UK/European standards for abrasion resistance.

This means our outsoles not only test well but they stay safer for longer, where you need them the most.

With 30+ years of R&D, manufacturing, trialling, and developing footwear, we know what makes your work footwear comfortable. Still to this day we invest significantly in biomechanical and materials research.

Rebound, Shock Absorption, Compression Set & Hydrolytic Stability – We've done the work to make our foam cushion under the foot as good as it can be.

Footwear affects an individual's kinetic chain & biomechanics, often having a deleterious impact on the body. Incorrect fitting or incorrect support can result in maladaptation and lead to acute or chronic pain.

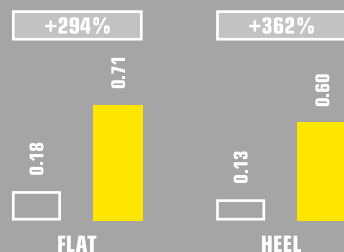
So, whether it's insoles, uppers, outsoles, breathability you name it our **AT-COMFORT™** is continuously being improved to enhance the lives of more and more working people every day.

**PLANE2™ OUTSOLE**

**SRA SLIP RESISTANCE TEST**  
CERAMIC TILE FLOOR + CLEANSING AGENT

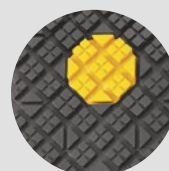


**SRB SLIP RESISTANCE TEST**  
STEEL PLATE + GLYCERINE



□ MINIMUM TESTING REQUIREMENT    ■ ANVIL TRACTION TEST RESULTS

**ULTRAGRIP™**  
OUTSOLE PATTERN  
Highest slip resistance  
in wet and dry environments.



## UTAH2

**SAFETY CLASSIFICATION:** O1 FO SRC

**EN STANDARD:** EN ISO 20347:2012

**SIZE RANGE:** UK3-12 (EU36-47)

**PRODUCT CODE:** Q2130-

*(When making orders, add the size after the dash, i.e. Q2130-3)*

Suitable for kitchens, informal FOH and cleaners where a protective toecap is not required.

### KEY FEATURES

- Unisex
- Leather and mesh upper
- Breathable
- Antistatic
- Lightweight
- Non-metallic
- EPR foam excellent comfort & rebound
- **ULTRAGRIP™** outsole pattern



## AT-SMART™ PRODUCTS (MEN'S)

## INDIANA

**SAFETY CLASSIFICATION:** O1 SRC

**EN STANDARD:** EN ISO 20347:2012

**SIZE RANGE:** UK6-13 (EU40-48)

**PRODUCT CODE:** Q2931-

*(When making orders, add the size after the dash, i.e. Q2931-3)*

Our executive styles are suitable for formal FOH/hospitality.

### KEY FEATURES

- Premium full grain Nappa leather upper
- Breathable
- Antistatic
- Lightweight
- Non-metallic
- EPR foam excellent comfort & rebound
- **ULTRAGRIP™** outsole pattern



## TENNESSEE

**SAFETY CLASSIFICATION:** O1 SRC

**EN STANDARD:** EN ISO 20347:2012

**SIZE RANGE:** UK6-13 (EU40-48)

**PRODUCT CODE:** Q2930-

*(When making orders, add the size after the dash, i.e. Q2930-3)*

Our executive styles are suitable for formal FOH/hospitality.

### KEY FEATURES

- Premium full grain Nappa leather upper
- Breathable
- Antistatic
- Lightweight
- Non-metallic
- EPR foam excellent comfort & rebound
- **ULTRAGRIP™** outsole pattern



## MICHIGAN

**SAFETY CLASSIFICATION:** O1 SRC

**EN STANDARD:** EN ISO 20347:2012

**SIZE RANGE:** UK6-13 (EU40-48)

**PRODUCT CODE:** Q2932-

*(When making orders, add the size after the dash, i.e. Q2932-3)*

Our executive styles are suitable for formal FOH/hospitality.

### KEY FEATURES

- Premium full grain Nappa leather upper
- Breathable
- Antistatic
- Lightweight
- Non-metallic
- EPR foam excellent comfort & rebound
- **ULTRAGRIP™** outsole pattern



## JACKSON2

**SAFETY CLASSIFICATION:** S1 SRC

**EN STANDARD:** EN ISO 20345:2011

**SIZE RANGE:** UK3-12 (EU36-47)

**PRODUCT CODE:** Q2134-

*(When making orders, add the size after the dash, i.e. Q2134-3)*

Suitable for cleaners and general maintenance where a protective toecap is required - non-metal in particular.

### KEY FEATURES

- Unisex
- Toe protection
- Suede leather and mesh upper
- Very breathable
- Antistatic
- Lightweight
- Non-metallic
- EPR foam excellent comfort & rebound
- **ULTRAGRIP™** outsole pattern



## NEVADA2

**SAFETY CLASSIFICATION:** S1P SRC

**EN STANDARD:** EN ISO 20345:2011

**SIZE RANGE:** UK3-13 (EU36-48)

**PRODUCT CODE:** Q2326-

*(When making orders, add the size after the dash, i.e. Q2326-3)*

Suitable for cleaners and general maintenance where a protective toecap is required - non-metal in particular.

### KEY FEATURES

- Unisex
- Toe protection
- Leather upper
- Breathable
- Antistatic
- Lightweight
- Non-metallic
- EPR foam excellent comfort & rebound
- **ULTRAGRIP™** outsole pattern



## TOE CAPS AND WHY WE NEED THEM

At Anvil Traction we use **composite toe caps** in our safety footwear, all toe caps tested under EN ISO 20345 are tested to the same criteria;

- Impact resistance - 200J worth of protection. Equivalent to a 20kg weight dropped from 1m height onto the toe cap.
- Compression resistance - 15KN compression test. Equivalent to 1.5 tonnes resting on the toe area.

Composite toe caps also have some other additional benefits;

- They are lighter than steel (Roughly 30%)
- They have good thermal insulation (Assists in maintaining the temperature of your feet in the hot and cold)

If you need more information on the exact test methods please get in touch!



## HARTFORD2

**SAFETY CLASSIFICATION:** S3 SRC

**EN STANDARD:** EN ISO 20345:2011

**SIZE RANGE:** UK3-13 (EU36-48)

**PRODUCT CODE:** Q2133-

*(When making orders, add the size after the dash, i.e. Q2133-3)*

Suitable for kitchen porters, cleaners, security (where a non-metal protective toecap is required), grounds maintenance or buildings maintenance.

### KEY FEATURES

- Unisex
- Toe and midsole protection
- Breathable
- Antistatic
- Water-resistant upper
- Lightweight
- Non-metallic
- EPR foam excellent comfort & rebound
- **ULTRAGRIP™** outsole pattern



## TULSA2

**SAFETY CLASSIFICATION:** S2 SRC

**EN STANDARD:** EN ISO 20345:2011

**SIZE RANGE:** UK3-12 (EU36-47)

**PRODUCT CODE:** Q2131-

*(When making orders, add the size after the dash, i.e. Q2131-3)*

Suitable for kitchen porters, cleaners, security, grounds maintenance, buildings maintenance or kitchen roles where a non-metal protective toecap is required.

### KEY FEATURES

- Unisex
- Leather upper
- Water-resistant upper
- Antistatic
- Composite toe cap
- Lightweight
- Non-metallic
- EPR foam excellent comfort & rebound
- **ULTRAGRIP™** outsole pattern



**GEORGIA**

**SAFETY CLASSIFICATION:** O1 SRC  
**EN STANDARD:** EN ISO 20347:2012  
**SIZE RANGE:** UK3-8 (EU36-42)  
**PRODUCT CODE:** Q2933-

*(When making orders, add the size after the dash, i.e. Q2933-3)*

Our executive styles are suitable for formal FOH/hospitality.

**KEY FEATURES**

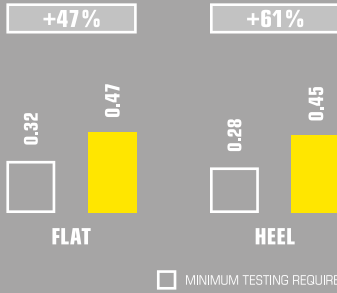
- Premium full grain Nappa leather upper
- Breathable
- 2.25cm heel
- Antistatic
- Lightweight
- Non-metallic
- Rubber outsole with TPU support
- **ULTRAGRIP™** outsole pattern



**CUBAN™ OUTSOLE**

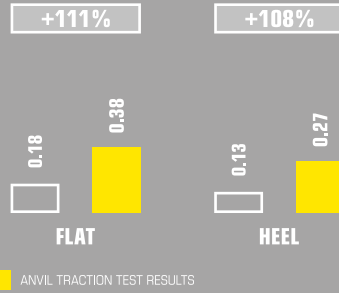
**SRA SLIP RESISTANCE TEST**

CERAMIC TILE FLOOR + CLEANSING AGENT

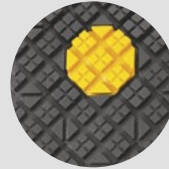


**SRB SLIP RESISTANCE TEST**

STEEL PLATE + GLYCERINE



**ULTRAGRIP™**  
 OUTSOLE PATTERN  
 Highest slip resistance  
 in wet and dry environments.



**CAROLINA**

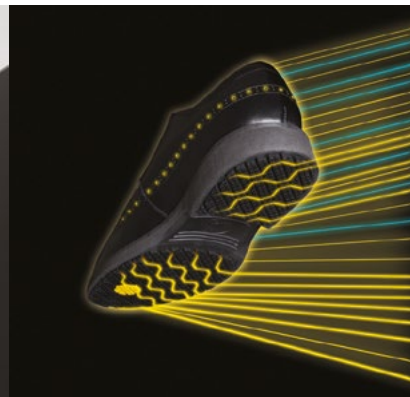
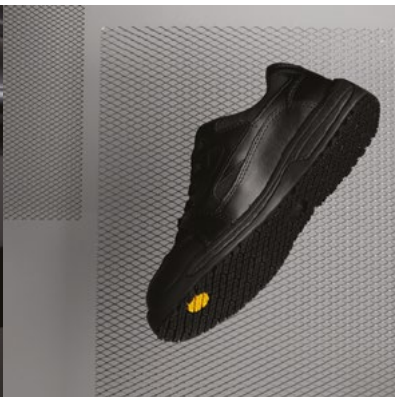
**SAFETY CLASSIFICATION:** O1 SRC  
**EN STANDARD:** EN ISO 20347:2012  
**SIZE RANGE:** UK3-8 (EU36-42)  
**PRODUCT CODE:** Q2934-

*(When making orders, add the size after the dash, i.e. Q2934-3)*

Our executive styles are suitable for formal FOH/hospitality.

**KEY FEATURES**

- Premium full grain Nappa leather upper
- Breathable
- Antistatic
- Lightweight
- Non-metallic
- EPR foam excellent comfort & rebound
- **ULTRAGRIP™** outsole pattern



OUR MARKET-LEADING  
 OUTSOLE TECHNOLOGY  
 PROVIDES PREMIUM  
**COMFORT, DURABILITY AND  
 SAFETY.**

**LOCKHART**  
 Catering Equipment  
 Tel: 03701 667277  
 Email: foodbuy.callcentre@bunzl.co.uk

**Foodbuy**  
 PROCUREMENT REIMAGINED

# WearerTech™

Compass have partnered with WearerTech to offer the best footwear options for all their members of staff.

WearerTech reduce pain for people who are on their feet all day at work including a wide range of job roles including catering, cleaning staff, porters, security staff and engineers.

We also work with the Knee, Ankle and Foot research centre at Salford University, studying what happens to the body when people are standing on their feet all day at work.

Using this research, WearerTech have developed a range of shoes that provide outstanding slip resistance and unbeatable comfort all day, reducing pain and discomfort.



I want all my chefs & all our chefs in Compass Group to be comfortable on their feet.

**Nick Vadis**  
Compass UK Culinary Director



Created in collaboration with Salford Uni using the science of biomechanics



Built to Last



## Sustainability Loop

We care for people working on their feet all day at work but we care about the planet too.

That's why we'll take back any shoes (any brand) back when they've reached to their end of life and recycle them into something new



## Our Modular Insole

Insoles no longer have to be ordered separately for the CustomPro styles (pg 4-6), this innovative modular insole set means you can choose your arch support after receiving your shoes

You can order replacement codes at Lockharts, code: **Q2908**

## HSE 5 Star Rated Non-Slip Sole

Our HSE-approved non-slip sole provides you with the best slip resistance.

Whilst we're passionate about comfort and support, safety is not compromised.



# The CustomPro Range

All products in our CustomPro range come with our innovative modular insole set which means you can choose your arch support after you purchase your shoes. This makes this range a fantastic style to provide for your staff meaning one shoe suits all foot shapes and sizes.

- Certified to EN20347 (safety toe cap versions on pg 6)
- Unisex style, available in sizes 3 - 12 (except for unisex style Vigour on page 5)
- All non-safety styles on pages 4-5 are machine washable to 40°C

## When Ordering Footwear

Please quote the product code for the style required followed by a dash and the relevant size. E.g. For product code Q2915 in size 8, quote Q2915-8

## Transform

A trainer design for work designed for people on their feet all day with our modular insole



Black with Black Sole

Code: **Q2915**



Black with White Sole

Code: **Q2916**

## Relieve

Formal design lace-up shoe designed for people on their feet all day with our modular insole



Black with Black Sole

Code: **Q2909**



Black with White Sole

Code: **Q2910**

## Relieve cont.



Brown with White Sole

Code: **Q2912**



Blue with White Sole

Code: **Q2911**

## Vitalise

A slip-on shoe for working on your feet all day with our modular insole



Black with Black Sole

Code: **Q2913**

## Vigour

A formal men's non-slip shoe for being on your feet all day with our modular insole



Black with Black Sole

Code: **Q2907**



## When Ordering Footwear

Please quote the product code for the style required followed by a dash and the relevant size. E.g. For product code Q2915 in size 8, quote Q2915-8

# The CustomPro Range – Safety Styles

All products in our CustomPro range come with our innovative modular insole set which means you can choose your arch support after you purchase your shoes. This makes this range a fantastic style to provide for your staff meaning one shoe suits all foot shapes and sizes.

- Certified to EN20345
- Unisex styles, available in sizes 3 – 12

## When Ordering Footwear

Please quote the product code for the style required followed by a dash and the relevant size. E.g. For product code Q2915 in size 8, quote Q2915-8

## Transform Safety Toe

A trainer design designed for people on their feet with a toe cap with our modular insole



Black with Black Sole

Code: **Q2920**

## Relieve Safety Toe

A slip-on shoe for working on your feet all day with our modular insole



Black with Black Sole

Code: **Q2917**

## Vitalise Safety Toe

A formal unisex non-slip shoe for being on your feet all day with our modular insole



Black with Black Sole

Code: **Q2918**



# The CanvasPro Range

All products in our CanvasPro range hold an excellent contemporary design that suits a wide range of uniform and customer-facing job roles.

- Unisex styles, available in sizes 3 – 12
- Machine washable to 40°C

## When Ordering Footwear

Please quote the product code for the style required followed by a dash and the relevant size. E.g. For product code Q2915 in size 8, quote Q2915-8

## Motivate

Lightweight lace-up canvas shoe with triple sole cushioning



Black

Code: **Q2541**

## Renew

Lightweight slip-on canvas shoe with triple sole cushioning



Black

Code: **Q2412**

## How to place your order

Visit the WearerTech page on [Lockharts](#). Make sure you log in to see the correct prices and products reflected in your contract. If you have any problems with logging into your account, please visit the [Compass Foodbuy PPE page](#) for further guidance.

## Uvex Trainer Style Boot

Black Microvelour S3 SRC Non Slip With Uvex Xenova Toe Cap, 100% metal-free

Code: **Q2310**

Sizes: 3 – 12



# Eco Best Technology®

## The environmental impact is the only difference

SHOWA's revolutionary Eco Best Technology® (EBT) offers the solution that makes a difference to the environment, without any compromise on protection and performance. Thanks to its special composition, our EBT gloves decompose within 1 to 5 years in active landfills\*, where for non-EBT products this takes more than 100 years. Launched in 2012, our biodegradable nitrile gloves are the industry's first, and today, SHOWA offers the most extensive selection of biodegradable hand protection on the market.



### Showa 731 EBT™

100% biodegradable nitrile mid-forearm gauntlet with Eco Best Technology®. Provides high levels of protection against solvents and acids.

- Suitable for use in wet, greasy & oily environments
- High protection against solvents & acids
- Extra Grip
- Reusable
- Eco Best Technology® (EBT)
- 100% Nitrile

Order code: Q2524 Size: 6,7,8,9,10,11



### Showa 7500PF™

Engineered with SHOWA's revolutionary Eco Best Technology® (EBT), the SHOWA 7500PF disposable glove is biodegradable, achieving 82% biodegradation in 386 days in a laboratory.

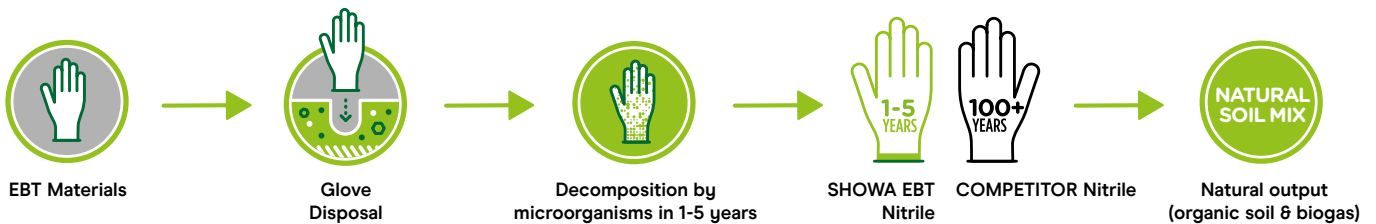
- Increased dexterity
- Flexible
- Textured Fingertips
- Eco Best Technology® (EBT)

Order code: Q2959 Size: xs,s,m,l,xl,xxl



**EBT GLOVES DECOMPOSE WITHIN 1 TO 5 YEARS IN ACTIVE LANDFILLS, WHEREAS REGULAR NITRILE GLOVES NEED MORE THAN 100 YEARS.**

### HOW DOES EBT WORK?



### SKYTEC™ Gauntlet range

Chemical-resistant gauntlet with a textured pattern on the palm. Flock-lined for extra comfort.

- Textured palm & fingertips for gripping in wet & dry conditions
- Resistant to a wide variety of chemicals and solvents
- Nitrile Coating
- EN374 and Category III approved

#### Tulsa™



Order code: Q2521  
Size: 7,8

#### Frisco™



Order code: Q2520  
Size: 6-10

#### Rialto™



Order code: Q2518  
Size: 6-10

### Skytec Michigan NTT™

Exceptional cut protection for the food industry

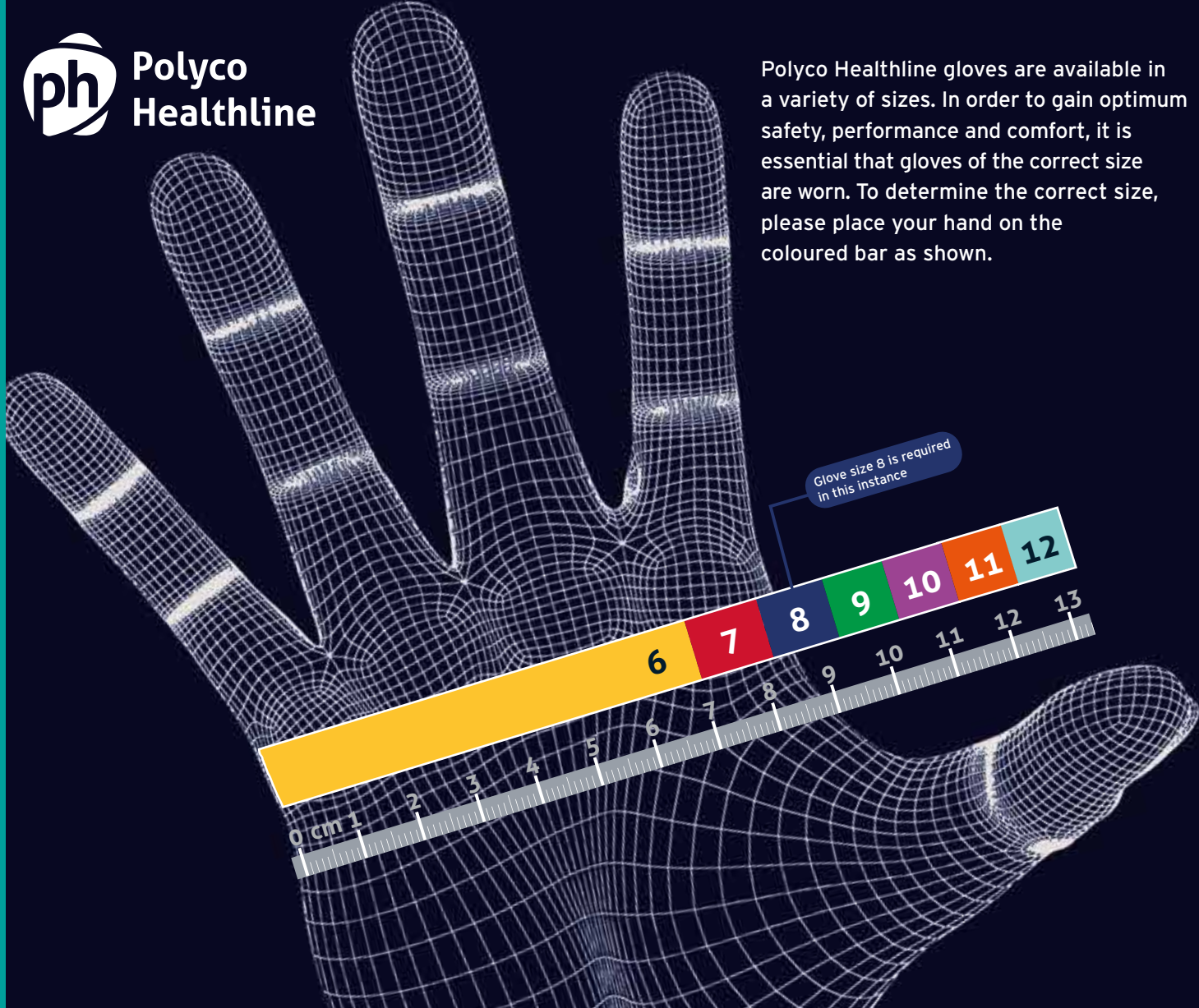
- Ambidextrous for easy and quick donning and doffing
- Cut resistant: Level E (EN 388:2016)
- 10 gauge medium weight glove for a comfortable wearing experience

Order code: Q2511  
Size: 6,7,8,9,10,11



\*as proven with ASTM D5511 & D5526 test results

Polyco Healthline gloves are available in a variety of sizes. In order to gain optimum safety, performance and comfort, it is essential that gloves of the correct size are worn. To determine the correct size, please place your hand on the coloured bar as shown.



## Polyflex® Eco: An Environmentally Conscious Range Of Gloves

Due to the increased awareness of plastic pollution in recent years, there is a growing demand and a genuine drive in the market to find innovative ways to deal with plastic waste.

Our **NEW** Polyflex® Eco range brings us a step closer to a more sustainable way of glove manufacturing and turns plastic waste into gloves.

Every step of the way, the Polyflex® Eco range of gloves is offering environmental benefits.

Through the entire life journey of the glove, PolyFlex® Eco will have less of an impact on our planet.

### Key Facts

- Gloves are currently made from **virgin polyester** which is derived from oil.
- By not using virgin polyester we are using **less oil** per pair and the manufacturing process also requires **less water**
- The process of refining oil for polyester production releases carbon dioxide, using **recycled PET** uses **less CO<sub>2</sub>** per pair.
- Our **plastic free packaging** will ensure the residual packaging made of paper and card can easily be recycled for a new life cycle.

### The Process



## Polyflex® Eco Cut

Hydrophobic treated seamless knitted cut resistant liner, with foamed nitrile palm, touch sensitive fingertips and made in part from recycled plastic bottles



### Features

**18 gauge cut level F:** Ultra-lightweight 18-gauge liner achieves the maximum achievable levels of cut resistance according to EN388:2016, and excellent abrasion and tear resistance

**Environmentally Conscious:** Each pair of gloves contains 11 grams of recycled plastic bottles (PET), cutting down our reliance on virgin materials like oil based polyester

**Touch Sensitive:** Tactile touch sensitive fingertips enable the wearer to use touch screen machinery or devices with precision and without the need to remove the glove

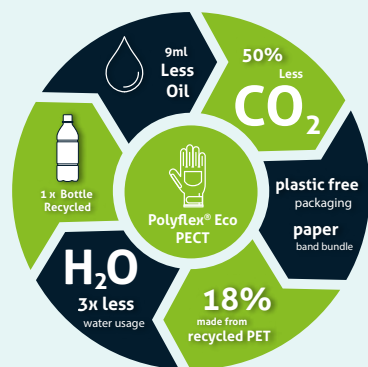
**Contact Heat Level 1:** Heat resistant to contact heat level 1 to broaden real world application suitability

**Reinforced Thumb Crotch:** Flat nitrile reinforcement between the thumb and forefinger for additional protection in an area that is highly susceptible to wear and tear

**Packaged plastic free:** Polyflex® Eco Cut is packed without the use of plastic; reducing the overall weight of packaging

**Water Repellent:** The Hydrophobic solution; allows for comprehensive and robust 3-Dimensional water-resistant performance whilst maintaining maximum breathability

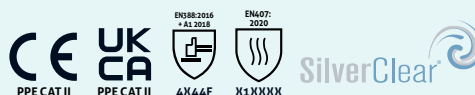
**SilverClear® glove formulated from silver,** a powerful and proven antimicrobial agent that inhibits bacterial, fungal and viral growth. The additive will protect the gloves from microbial growth but also from mold and bad odours avoiding premature material degradation and discoloration



<b>Code</b>	<b>Q2943</b>
<b>Sizes</b>	<b>6-11</b>

### Sectors

- Automotive • Construction & Utility • Engineering and Manufacturing
- Oil and Gas • Waste Management and Local authority



## Polyflex® Eco Therm

Thermal lined, seamless knitted liner made in part from recycled plastics, with a sandy latex coating.



### Features

**Environmentally Conscious:** Each pair of gloves contains 24 grams of recycled plastic bottles (PET), cutting down our reliance on virgin materials like oil-based polyester.

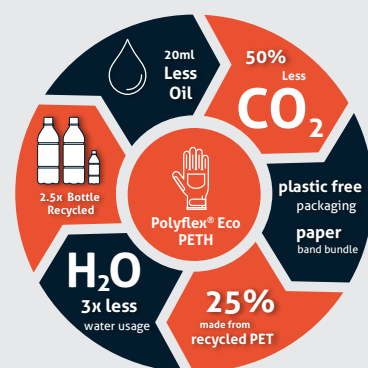
**Warm:** Soft knitted thermal lining keeps hands exceptionally warm

**Grip:** The sandy latex coating has been specifically developed to resist abrasion, whilst maintaining superior grip and outstanding comfort and dexterity

**Packaged plastic free:** Polyflex® Eco Therm is packed without the use of plastic, reducing the overall weight of packaging.

**Cut resistant:** To ensure use in the widest range of sectors Polyflex® Eco Therm has been engineered to score a cut 3 against EN388 2016

**Hot and Cold Contact** Polyflex® Eco Therm has been engineered to protect against handling hot and cold objects



<b>Code</b>	<b>Q2944</b>
<b>Sizes</b>	<b>8-10</b>

### Sectors

- Construction & Utility • Engineering and Manufacturing • Warehousing, Transport and Logistics • Waste Management and Local authority





# Bakers Mitt™

Heavy duty terry cloth with integral liquid and steam barrier



## Features

Heat Resistant: Tested to Level 2 (up to 250°C) for contact heat according to EN407

Resists Steam and Liquid: The innovative integral PVC barrier within the glove provides effective protection from liquids and steam

Protection: The heavyweight terry cotton outer shell offers good abrasion and cut resistance

Ambidextrous: Can be worn on either hand, extending the life of the glove

Comfort: Soft fleecy lining for ultimate comfort

<b>Code</b>	<b>Q2205</b>
<b>Sizes</b>	<b>One size</b>

## Sectors

- Food Manufacturing and Preparation



# Hot Glove™

Double layered cotton glove with nitrile grip coating



## Features

Heat Resistant: Tested to Level 2 (up to 250°C) for contact heat according to EN407

Protection: Double layered cotton for extra protection and durability

Grip: Nitrile grip pattern offers good grip for safer handling

Generous Fit: Easy on and off design

Ambidextrous: Can be worn on either hand, extending the life of the glove

Range: Available in short (9010) and long (9011) lengths

<b>Code</b>	<b>Q2140</b>
<b>Sizes</b>	<b>7 and 9</b>

## Sectors

- Food Manufacturing and Preparation



## Matrix® Air C3

Ultra-lightweight cut resistant liner with a polyurethane palm coating



### Features

**Comfort:** 18-gauge seamless knitted liner is ultra-lightweight, breathable and highly flexible, ensuring ultimate comfort at all times

**Cut Resistant:** Fine cut resistant yarn offers excellent cut resistance in a lightweight glove

**Durable:** Thin polyurethane coating in combination with the cut resistant liner delivers abrasion performance making the glove highly durable

**Design:** Combines tactility and protection meaning you no longer have to compromise on user comfort, safety or productivity

<b>Code</b>	<b>Q2942</b>
<b>Sizes</b>	<b>6-11</b>

### Sectors

- Automotive • Construction & Utility • Engineering and Manufacturing
- Waste Management and Local authority



## Grip It® Oil Gauntlet C1 (34cm)

Seamless knitted chemical resistant gauntlet with dual nitrile coating



### Features

**Handling:** A flexible and robust glove that utilises two layers of nitrile coating to provide ultimate grip, abrasion protection and durability

**Grip:** The palm coating is infused with microfoam bubbles increasing resistance to oils and maximising grip in wet and oily handling environments

**Chemical Resistance:** Provides good protection against a wide range of chemicals, including strong detergents and oils

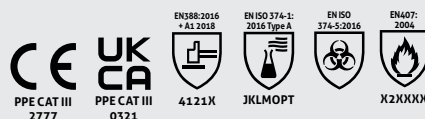
**Comfort:** Resilient dual nitrile coating and soft seamless knitted liner provides an ultimate level of comfort

Heat resistant up to 250°C or Contact Heat Level 2, EN:407:2004

<b>Code</b>	<b>Q2334</b>
<b>Sizes</b>	<b>8-11</b>

### Sectors

- Automotive • Construction & Utility • Engineering and Manufacturing
- Food Manufacturing and Prep • Janitorial • Warehousing, Transport and Logistics





- Versatile Protection From -78°C to 260°C – Reinforced WebGuard™ fabric between thumb and forefinger offers heat and cold protection from --78°C to 260°C) for 15 seconds.
- Kevlar® Stitching – Durable Kevlar® stitching ensures maximum protection against heat and steam.
- Non-Slip Grip – Textured Neoprene® material provides superior grip in extreme temperatures.
- Sanitary Construction – Stain and chemical resistant exterior is dishwasher safe for quick cleanup.
- Ambidextrous Design – Accommodates both left and right hand use.
- Convenient hanging loop.



KEY	CODE	DESCRIPTION	SELLING QTY	CASE QTY
1	Q2946	13" Conventional UltiGrip Oven Mitt	Single	1
2	Q2527	15" Conventional UltiGrip Oven Mitt	Single	1
3	ED418	17" Conventional UltiGrip Oven Mitt	Single	1
4	Q2945	15" Puppet UltiGrip Oven Mitt	Single	1
5	Q2528	17" Puppet UltiGrip Oven Mitt	Single	1



**Hi-Quality Mens Kw Liner Glove**

General purpose liner glove for use inside any glove where needed

Q2414



**Superior Quality Rigger Gloves**

General purpose work where abrasion resistance if needed but not high on cut, tear or puncture

Q2148



**Canadian H/Qred Back/Cuff Rigger**

Rough handling tasks only where good abrasion and tear resistance needed, no liquid hazard and where dexterity is not important

Q2157



**JSP Evo 3 Vented Helmet White**

Q2557



**First Base 3 Bump Cap - Navy**

Any task where you could bump your head e.g. certain cleaning roles, event management

Q2304



**JSP Evo 3 Vented Helmet Orange**

Q2559



**JSP Evo 3 Vented Helmet Yellow**

Q2558





**Elasticated Chinstrap**

Q2561



**Interrex Helmet Mounted Ear Defenders (SNR28)**

For above helmets Q2561- elasticated chin strap (for above helmets)

Q2560



**Big Blue Ear Defenders**

Quality ear defenders, for use in medium duty industrial and outdoor applications

Q2365



**Disposable Corded Foam Ear Plugs**

Q2936



**3m Particulate Valved Mask Box Of 10**

Q2184



**Fold Flat P2V Valved Respirator PK 10**

FFP2 Dust Masks protect against moderate levels of dust, as well as solid and liquid aerosols

Q2293



**Versaflow Respirator Starter Kit**

Q2736



**Versaflow Respirator White Hood**

Q2732



**Versaflow Respirator Filter**

Q2960



**Slim Goggles**

Tasks where eye protection is required e.g. buildings maintenance, grounds maintenance, general maintenance, woodworking

Q2325



**UVEX Ultrasonic Safety Goggles Orange/Grey**

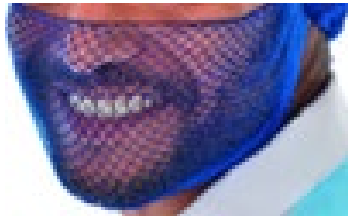
Deep cleaning and beer pipe cleaning in establishments using light chemicals, general maintenance

Q2143



**Premier Blue Hair Nets 3 Rings of 48**

Q0208



**Fine Mesh Beard Snood, Blue (Pack 36)**

Q2055



**Apron Rubber Black Large**

F3428



**Polycotton Apron Ties**  
For use with aprons

Q2182



**72145 Rect Utility Knife 9mm Soft Grip**

Safety knife for a wide range of uses where a knife is required (not for food use)

Q2292



**Bon Chef Unisex White Coat**

Q2570-XS

Q2570-L

Q2570-S

Q2570-XL

Q2570-M



**Hi-Vis Executive Waistcoat Yellow**  
 Grounds maintenance, buildings maintenance, security and anywhere where moving vehicles are operating

Q2164-M  
 Q2164-L  
 Q2164-XL



**Hi-Vis Waterproof Jacket Saturn Yellow**  
 Grounds maintenance, buildings maintenance, security and anywhere where moving vehicles are operating

Q2151-S  
 Q2151-M  
 Q2151-L  
 Q2151-XL



**Rosemoor CL3 Breathable Lady Jacket Yellow**

Q2314-S  
 Q2314-M  
 Q2314-L



**Rosemoor CL3 Breathable Lady Jacket Orange**

Q2314-S  
 Q2314-M  
 Q2314-L



**Hi-Vis Breathable Overtrouser Orange**

Q2950-S  
 Q2950-M  
 Q2950-L



**Ballistic Trousers Navy**

Q2487-S  
 Q2487-M  
 Q2487-L



**Hi-Vis Waterproof Trousers Saturn Yellow**

Grounds maintenance, buildings maintenance, security and anywhere where moving vehicles are operating

Q2150-S  
 Q2150-M  
 Q2150-L  
 Q2150-XL



**Womens Sizes Available on Request**



**Maternity wear Available on Request**